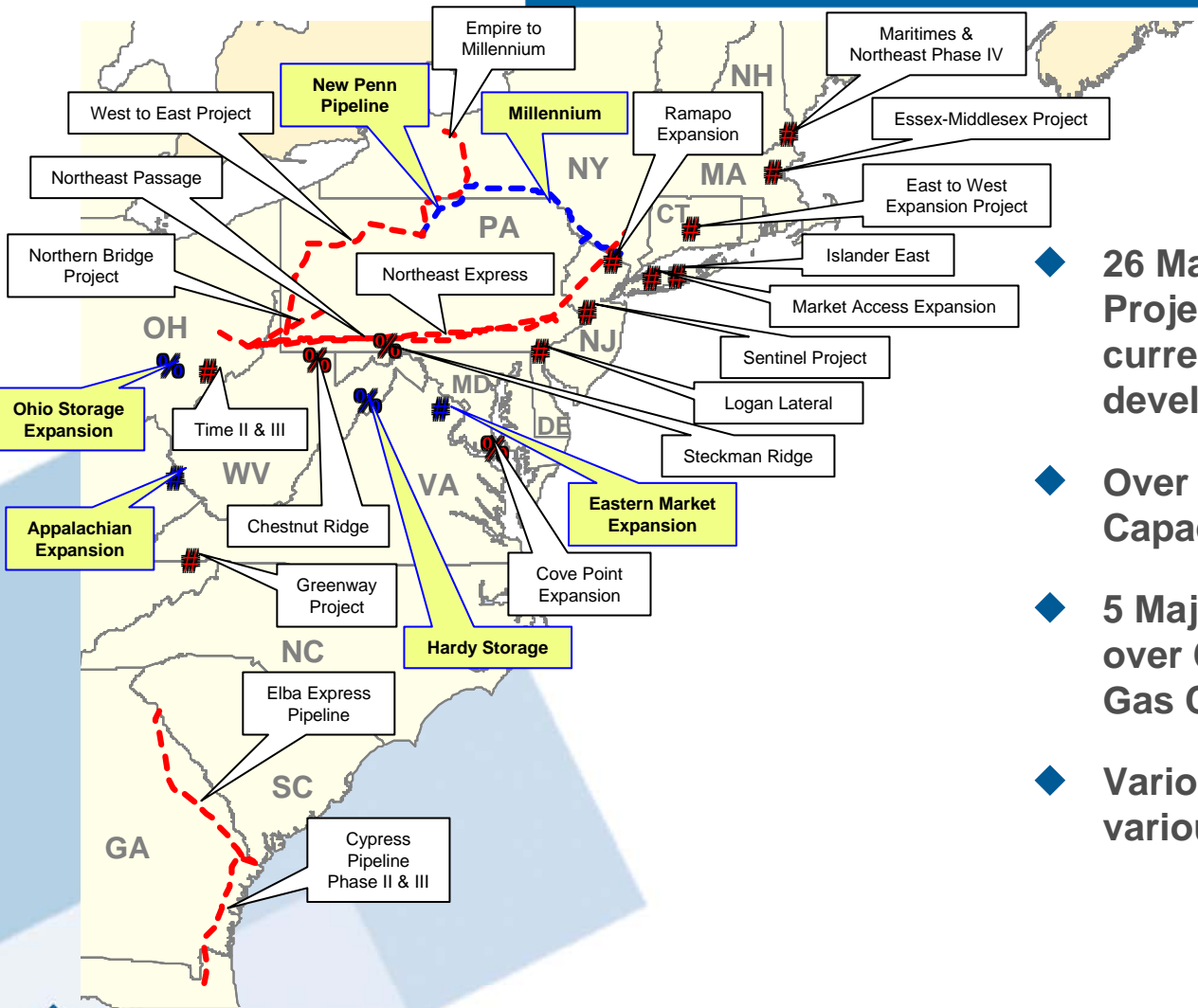

INGAA Foundation Spring Meeting

East Coast Projects Overview

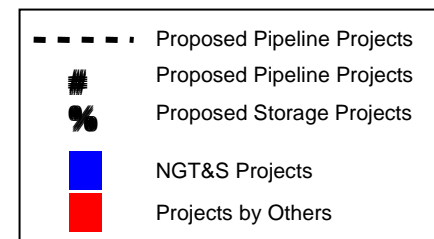
April 17, 2008

Chris Helms

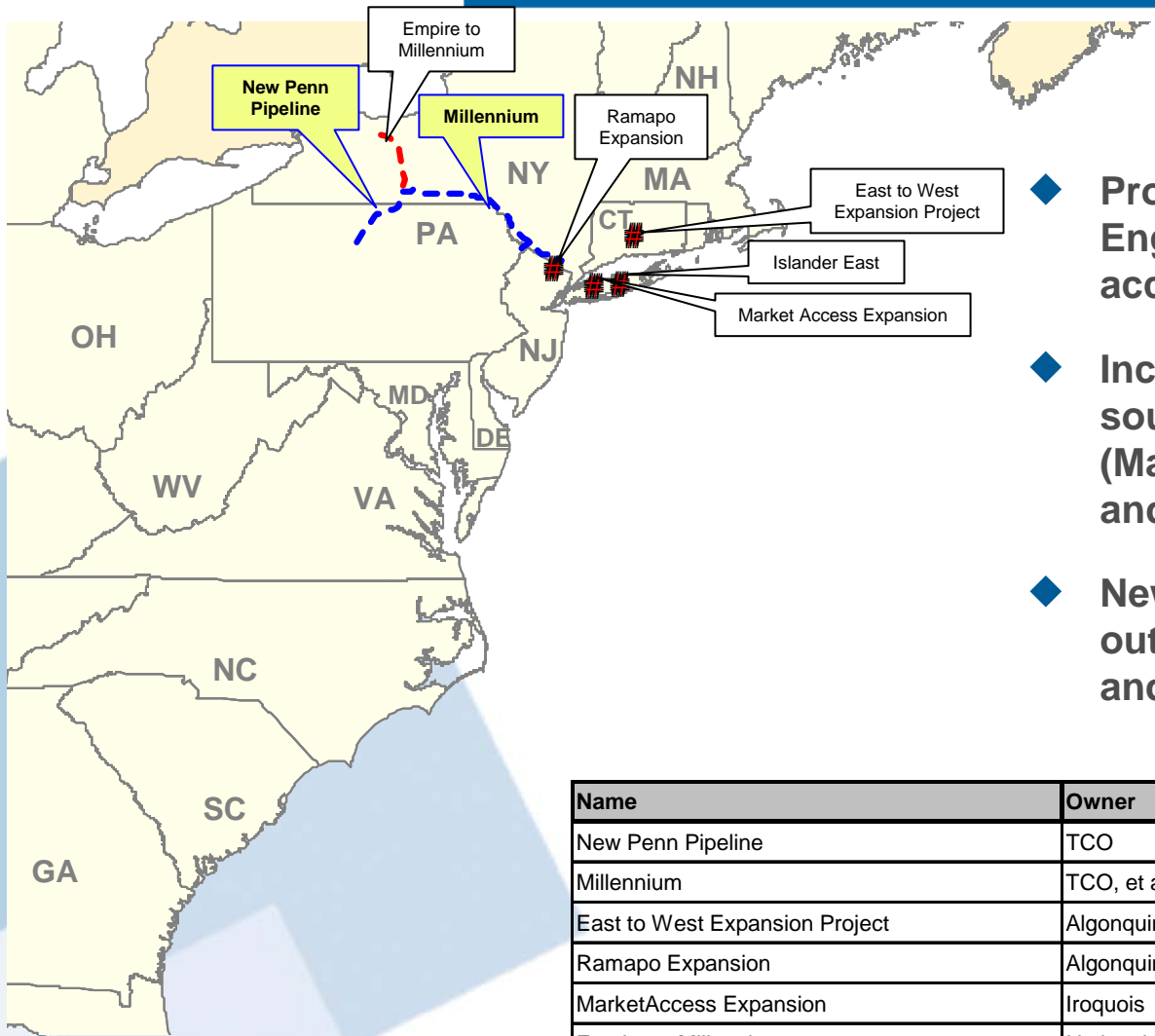
East Coast Projects Overview



- ◆ 26 Major Pipeline and Storage Projects Proposed for the area currently in various stages of development
- ◆ Over 10 Bcf of additional Pipeline Capacity by the end of 2012
- ◆ 5 Major Storage Projects providing over 62 Bcf of additional Working Gas Capacity by 2009
- ◆ Various East Coast LNG projects in various stages of development



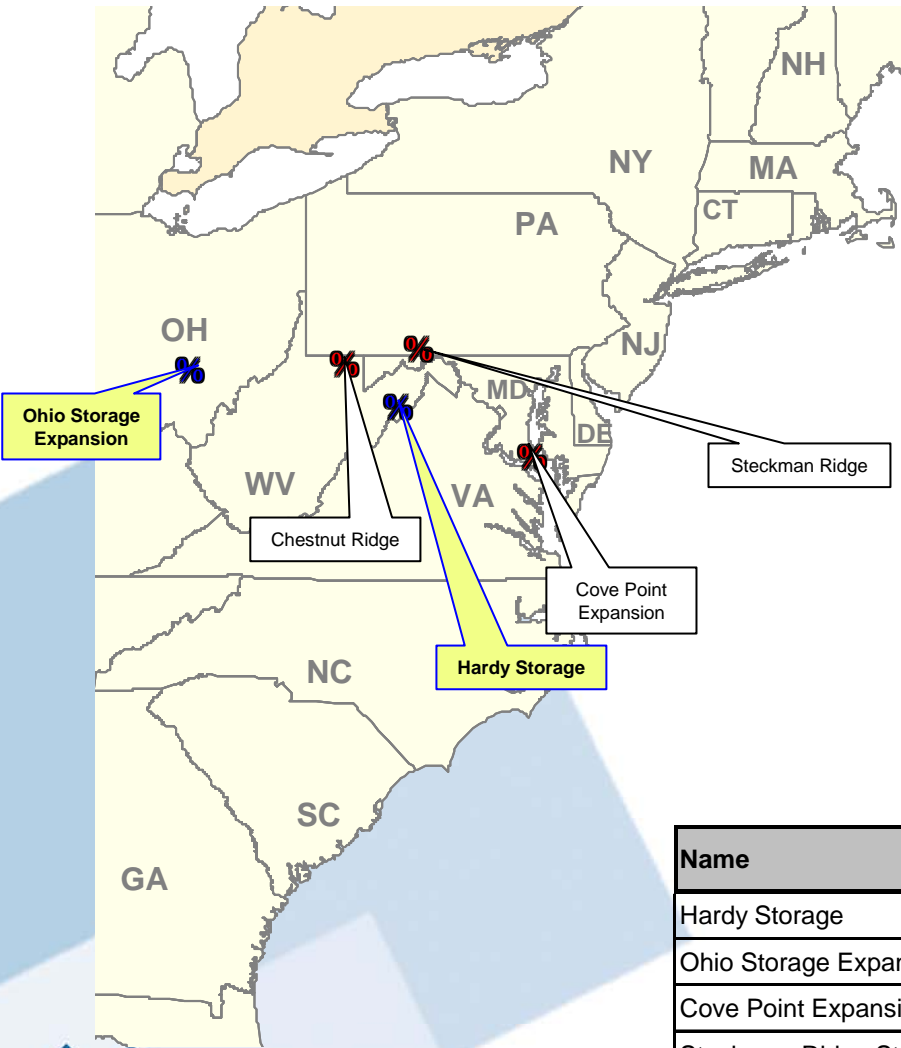
Millennium and Related Projects



- ◆ Provides New York and the New England markets with additional access to natural gas supplies
- ◆ Incorporates potential supply sources from Canada, Western PA (Marcellus Shale), local New York and other areas
- ◆ New Penn Pipeline provides an outlet for Appalachian Basin, LNG and Rockies supply

Name	Owner	MDth/d	In-Service Date
New Penn Pipeline	TCO	500	Apr/2010
Millennium	TCO, et al	500	Dec/2008
East to West Expansion Project	Algonquin	1,000	Nov/2009
Ramapo Expansion	Algonquin	325	Nov/2008
MarketAccess Expansion	Iroquois	100	Nov/2008
Empire to Millennium	National Fuel	260	Late 2008
Islander East	Spectra Energy / Key Span	260	Nov/2008

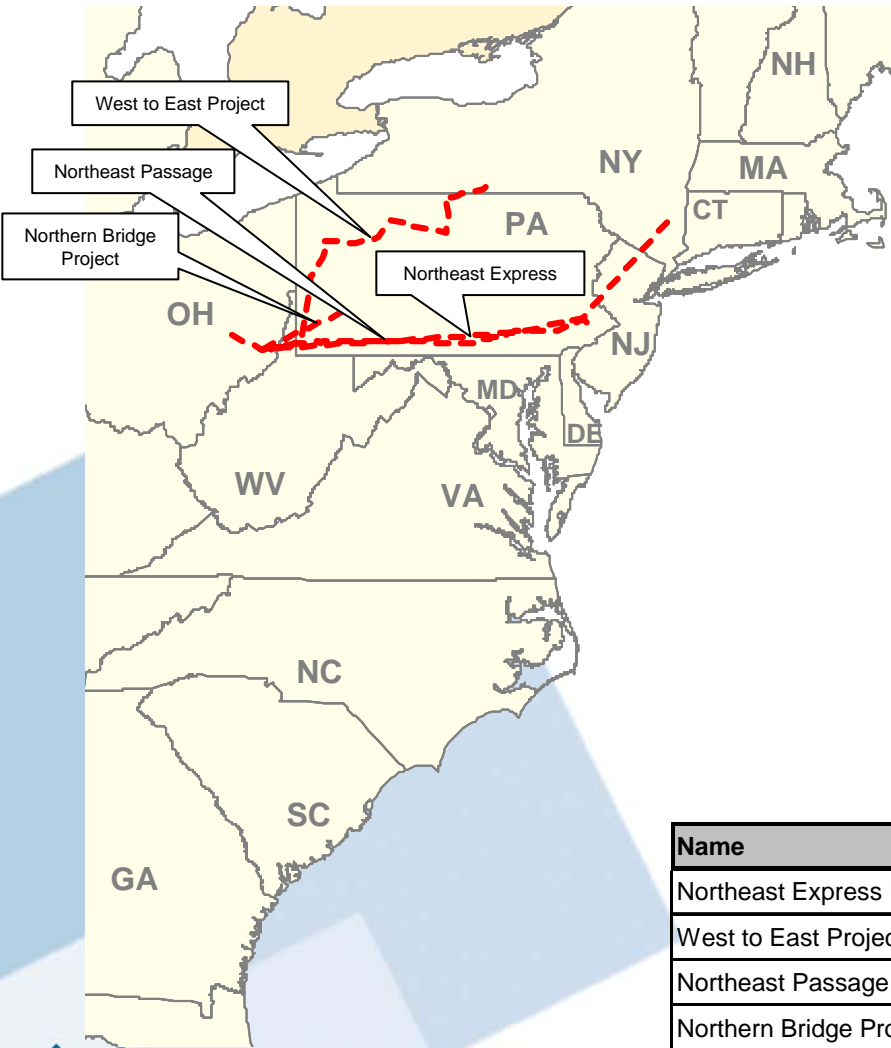
Storage Related Projects



- ◆ Additional storage allows Northeast markets the ability to manage price volatility, supply diversity, and reliability during peak winter and summer months
- ◆ Provides an additional 62.6 Bcf of working gas by November, 2011

Name	Owner	Working Gas	In-Service Date
Hardy Storage	TCO	12 Bcf	Apr/2007
Ohio Storage Expansion	TCO	6.9 Bcf	Nov/2009
Cove Point Expansion	Dominion	6.7 Bcf	Late/2008
Steckman Ridge Storage	Spectra Energy / NJR	12 Bcf	Apr/2009
Chestnut Ridge Storage	Tenaska / Ecorp	25 Bcf	Q1/2009

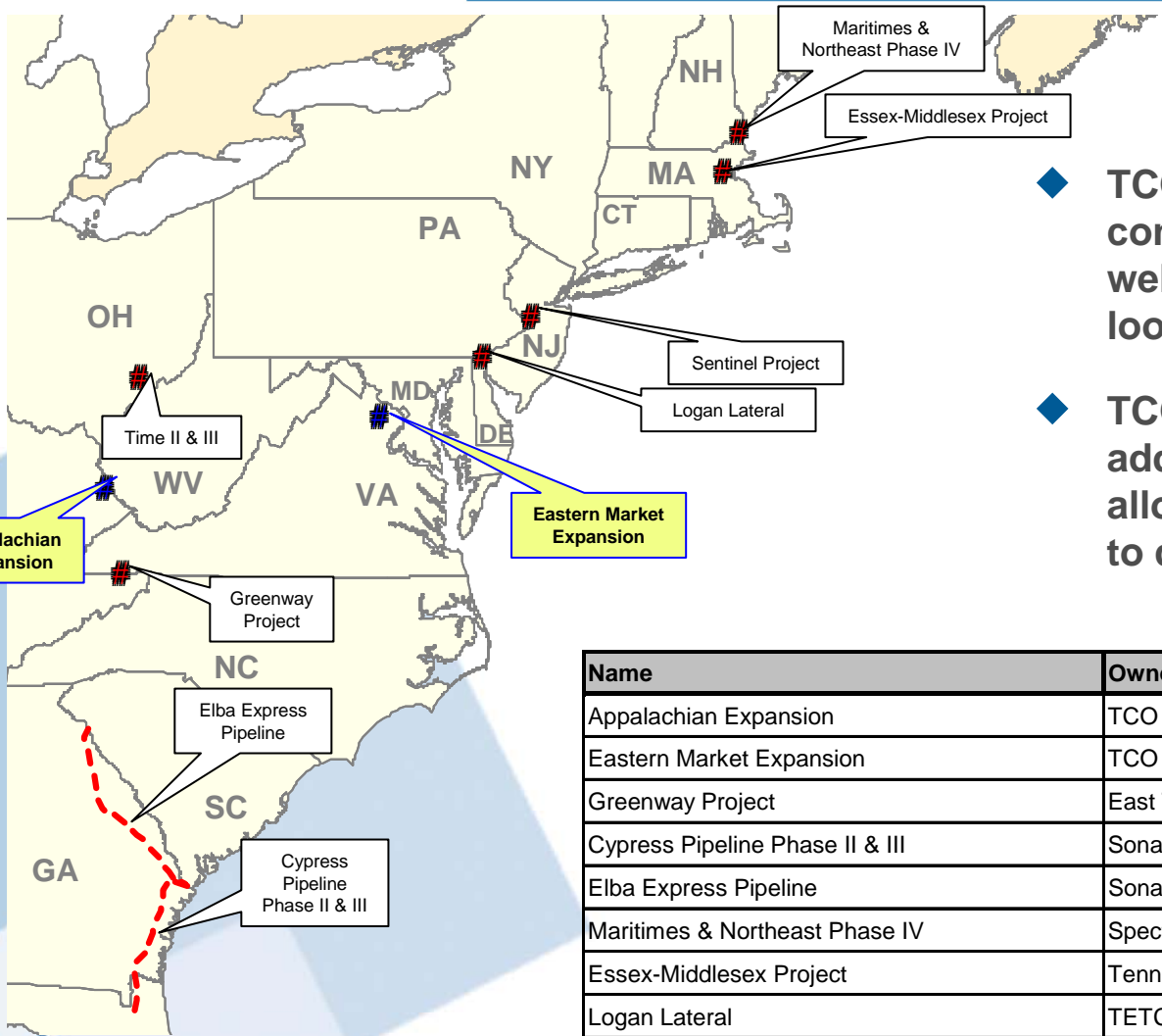
Rockies Express Takeaway Projects



- ◆ Northeast Express project consists of a 375 mile extension of REX from Clarington, OH to Princeton, NJ
- ◆ Northeast Passage includes 400 miles of 36” pipeline from Clarington, OH to Sussex County, NJ and 3 compressor stations totaling 72,000 HP
- ◆ Northern Bridge Project provides 150,000 Dth/d of transportation from Clarington, OH to Oakford/Delmont, PA

Name	Owner	MDth/d	In-Service Date
Northeast Express Project	Kinder Morgan (REX), et al	1,500	Late 2010
West to East Project	National Fuel Gas	550 to 750	Summer/2011
Northeast Passage	Tennessee Gas	1,100	Fall/2011
Northern Bridge Project	TETCO	150	Nov/2009

Other East Coast Projects



- ◆ TCO's Eastern Market Expansion consists of drilling new storage wells, adding compression, and looping existing pipelines
- ◆ TCO's Appalachian Expansion will add a new compressor station allowing producers in WV and KY to deliver gas to premium markets

Name	Owner	MDth/d	In-Service Date
Appalachian Expansion	TCO	100	Nov/2009
Eastern Market Expansion	TCO	100	Apr/2009
Greenway Project	East Tennessee Natural Gas	250 to 450	2012
Cypress Pipeline Phase II & III	Sonat	280	2010
Elba Express Pipeline	Sonat	1,200	2012
Maritimes & Northeast Phase IV	Spectra Energy	418	Nov/2008
Essex-Middlesex Project	Tennessee Gas Pipeline	82	Q4/2007
Logan Lateral	TETCO	900	Q4/2011
Time II / Time III	TETCO	475	Late 2010
Sentinel (Pleasant Valley/Cove Point & Leidy)	Transco	90	Nov/2009